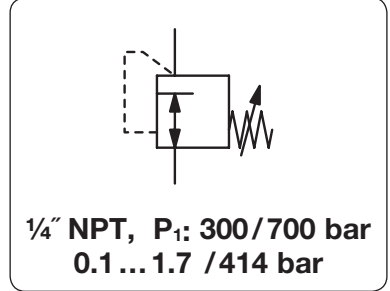


High Pressure Regulator up to 690 bar

HP

Description	Piston-operated high pressure regulator HP300/400/500R and diaphragm-operated HP500 are marked by high flow and great reliability.	
Media	compressed air, non-corrosive gases or liquids	
Supply pressure	max. 690 bar at HP300, max. 414 bar at HP400, max. 241 bar at HP500	
Accuracy	at supply pressure variation of 7 bar: < 5 mbar pressure deviation at HP300 < 250 mbar pressure deviation at HP400 < 120 mbar pressure deviation at HP500	
Adjustment	by black plastic knob	
Leakage rate	< 10 ⁻⁴ mbar l/s He 2x < 10 ⁻⁶ mbar l/s He at HP500	
Relieving function	non-relieving, optionally relieving	
Gauge port	1/4" NPT for inlet / outlet pressure, shifted by 70°	
Temperature range	- 5 °C to 75 °C / 23 °F to 167 °F for HP300 -40 °C to 75 °C / -40 °F to 167 °F for HP500	
Material	Body: brass, optionally stainless steel Spring cage: brass at HP300, nickel-plated at HP400/500 Valve seat: Vespel at HP300, Teflon at HP400/500	Seals: NBR/Buna-N Diaphragm: stainless steel at HP500 Inner valve: stainless steel



Dimensions			K _v	Flow rate	Connection	Pressure range	Order number
A	B	C	value	m ³ /h*1	thread	bar	
mm	mm	mm	(m ³ /h)	m ³ /h*1	NPT		

High pressure regulator 414 bar							non-relieving, brass	HP300
55	175	19	0.05	90	1500	1/4" NPT	0.3 ... 35	HP300-035
							0.6 ... 55	HP300-055
							0.7 ... 104	HP300-105
							1.0 ... 172	HP300-175
							1.7 ... 276	HP300-280
							3.4 ... 414	HP300-415



HP300, accessory: mounting brackets

High pressure regulator 414 bar							non-relieving, brass	HP400
50	137	13	0.05	90	1500	1/4" NPT	0.7 ... 104	HP400-104
							1.0 ... 172	HP400-170



HP400

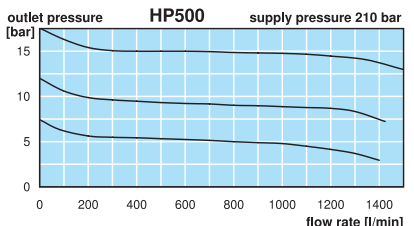
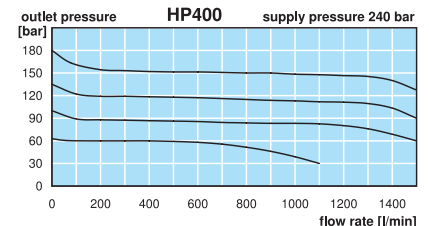
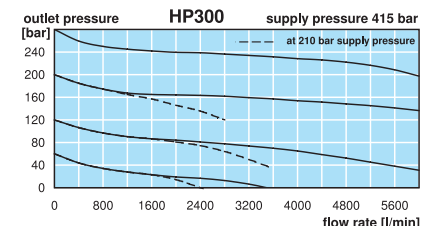
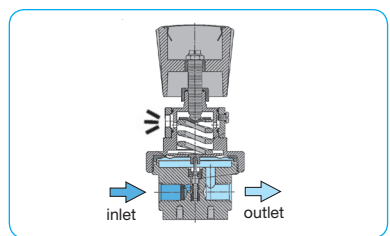
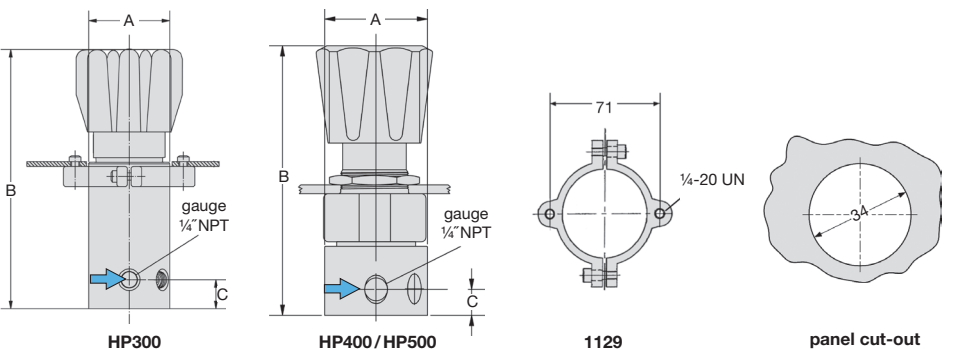
High pressure regulator 241 bar							non-relieving, brass	HP500
50	137	19	0.05	90	1500	1/4" NPT	0.1 ... 1,7	HP500-002
							0.1 ... 3,5	HP500-004
							0.1 ... 7,0	HP500-007
							0.2 ... 17	HP500-017
							0.3 ... 35	HP500-035



HP500

Special options, add the appropriate letter			
relieving	HP300-...R	HP400-...R	HP500-...R
body made of SST	HP300-...S (690 bar)	HP400-...S	HP500-...S
free of grease and oil	suitable for oxygen,	P ₁ < 200 bar	for HP500
for oxygen	specially cleaned,	P ₁ < 200 bar	for HP300/400
brass pressure gauge	for brass body, inlet side	HM	outlet side
SST pressure gauge	for stainless steel body, inlet side	H	outlet side

Accessories, enclosed		
set of mounting brackets	for HP300	1129
mounting nut	for panel mounting, made of stainless steel	for HP400/500 8686-1



*1 at 240 bar supply pressure and 30 bar outlet pressure